

## CHECKWEIGHERS

# HP/14

## High Accuracy Checkweigher



The HP-14 is All-Fill's high precision checkweighing machine. It can achieve accuracies of  $\pm .10g$  on certain applications. The HP-14 checkweigher is capable of handling packages up to 8 lbs at rates up to 300 containers per minute. Easily integrated with any filler, bagger, cartoner or metal detector. An All-Fill Checkweigher is the strategic packaging solution to avoid product waste and increase efficiencies. Pouches, bags, and other unsupported or irregularly shaped packages pose a problem to conventional checkweighers that use chains or bands as a conveying medium.

The HP-14 weigh table which features an electro-magnetic force restoration load cell, is rigidly constructed and the belt, pulleys, and gearhead drive motor are all balanced to ensure accurate, reliable weighing of flexible packages. The All-Fill HP-14 is an excellent add-on to a Form Fill and Seal or cartoning system. All weighing operations are controlled by the All-Fill HP-14's flexible CW700 digital control system, which is easy to integrate with certain data networks.

The system features a user-friendly, graphical touchscreen and a simplified menu and selection structure for all operating functions. Up to 100 different set-ups can be entered for each size, weight, container, or package. There are no confusing programming steps when changing products, sizes, or weights. An exclusive automatic calibration feature determines all relevant operating parameters for optimum accuracy and checkweighing efficiency. For at-a-glance updates, the All-Fill HP-14 features a large character weight display and easy-to-see tower lights.

Everything about the All-Fill HP-14 is made for reliable operation even in the harshest industrial environments. A compact, rugged frame enables easy installation in tight production spaces with an existing filling line. The HP-14 uses an electro magnetic force restoration load cell for superior accuracy.

### FEEDBACK CAPABILITIES:

As an option, All-Fill Checkweighers can be equipped to provide feedback signals to different equipment in order to correct weights to a desired target weight. The touch-screen control panel software includes an easy to use screen to set and control feedback parameters such as:

- Feedback Control
- Dead band Range
- Feedback Limit
- Percent of Adjustment
- Feedback Ignores
- Feedback Samples

An additional feedback status screen displays relevant feedback data including:

- Package Weight
- Feedback Range
- Ignored Packs
- Feedback Samples

- Average Feedback Weight
- Average Deviation Weight
- Feedback Raise/Lower Status
- Feedback Pulses
- Feedback On/Off Control

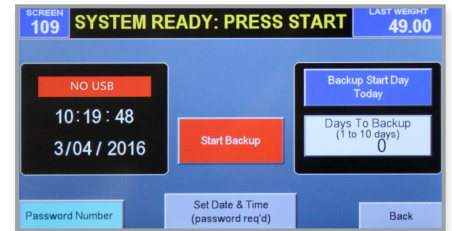
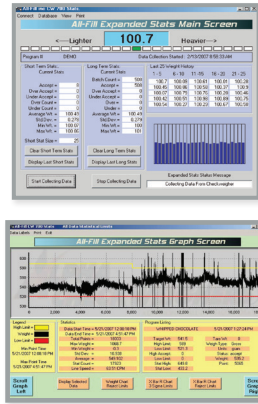
**DATA SOFTWARE PACKAGES:**

All-Fill Checkweighers provide three different data software packages that range in function. The data output package records the weight and package data detected by the All-Fill Checkweighers. All relevant package data is recorded, including:

- Date and Time
- Weighing Time
- Setup Recipe Number

- Product Name
- Target Weight
- Last Weight
- High/Low/Accept Status

Data Capture: Data is sent to an ethernet connection or RS-232 connection. The software installs easily on most standard configuration PC's and is exported in a Comma Separated Values (.csv) document.



Shown here are images from our software package, displaying a variety of statistics to make sure your packaging process is running efficiently and maximizing your production.

**SPECIFICATION SUMMARY:**

<b>Line Speeds:</b>	Up to 300 packs per minute
<b>Accuracy:</b>	+/- .10g with certain applications
<b>Package Weights:</b>	up to 8 lbs per package
<b>Maximum Package Dimensions:</b>	12 in wide by 18 in long; other sizes available
<b>Construction:</b>	Stainless steel and anodized aluminum (standard)
<b>Direction of Travel:</b>	Left to right or right to left
<b>Conveyor Belts:</b>	All Variable Speed, Up to 12" wide and up to 24" long, custom sizes available
<b>Weight Indicator:</b>	3 light tower (standard), 5 light tower (optional), Others
<b>Controls:</b>	Standard 10" touch screen HMI with embedded controller 100 program memory, 300 programs option
<b>Control Mounting:</b>	Rear-mounted control box (standard) Front-mounted, pedestal, and rotated 180° (optional)
<b>Data Output:</b>	RS-232, ethernet, or USB
<b>Reject Devices:</b>	Air blast, bopper, pusher, signal (only), swing gate, horn or special reject devices available
<b>Reject Location:</b>	Outfeed conveyor or remote
<b>Reject Direction:</b>	Front, rear, or special
<b>Electrical Requirements:</b>	110V single phase, 60 HZ
<b>Pneumatic Requirements:</b>	80 PSI/4 SCFM
<b>Options:</b>	Special Construction; wash down, and more, Container transfer: roller or dead plate or timing screw, Guide Rails
<b>Feedback:</b>	Contact closure, digital, single/dual head filler, or custom

**WORLD-CLASS SERVICE & SUPPORT:**

We understand downtime and its effect on your bottom line. Packaging machinery is only as strong as its service and support system. If you run into challenges, All-Fill's Service team consists of 15 full time service employees with over 150 years of combined experience in the packaging industry. Our team can train, install, and troubleshoot any All-Fill machinery. We service domestically and in our international territories: Canada, Central and South America, India, China and Australia. Contact our Service team at [Service@all-fill.com](mailto:Service@all-fill.com).

**PARTS SUPPORT:**

All-Fill machines are designed using the most innovative controls and the highest quality parts and components. All-Fill has an unmatched ability to identify and resolve issues that may arise with your machine. Our parts department provides quality support in a timely manner to reduce your downtime and stocks most parts for quick delivery. From mechanical assemblies, electronic components, tooling, machine accessories and software, we have the parts you need. Contact our Parts Department at [AFI-parts@all-fill.com](mailto:AFI-parts@all-fill.com).

**INTERNATIONAL INQUIRIES:**

All-Fill's packaging machinery is available worldwide for almost any product and industry. Our more than 50 years of engineering expertise combined with our industry leading field support makes us a leader in the industry. We design, manufacture, install and service machinery with maximum accuracy and reliability. Our global presence means uncompromising service and support, no matter what or where your needs are. Reach out today to discuss your project with our international sales team. Contact us at [info@all-fill.com](mailto:info@all-fill.com).

